



# TAURANGA BOYS' COLLEGE HOCKEY

Tauranga Boys' College has a proud and successful history in New Zealand Hockey. It is regarded as one of the best hockey schools in the country. It has been the top school in the Bay of Plenty region for the last 10 years. As one of the only schools in the country with its own Astro-turf, Tauranga Boys' has a thorough development and coaching program.



The school's 1st XI (top team) is coached by former Black Stick Stephen Graham along with his school coaching he is currently involved in the New Zealand Development Programme, working with the goalkeepers and defence. Mark Page is a level 2 accredited coach and has been involved with the 1st XI for many years. Mark has both national and regional experience as a player and coach.

Gill Gemming, development officer for Oceania Hockey is heavily involved and assists students through the hockey pathway at Tauranga Boys' College. This gives Tauranga Boys' College unique access to current NZ players and coaches.

## OUR 2 ELITE TEAMS

We have three elite teams that travel to play in National tournaments.

- 1. 1st XI (Rankin Cup / India Shield)** - This is the pinnacle tournament of the season which plays host to the top 32 teams in the country who play in a week long tournament to find the National Champion.
- 2. 2nd XI (Galletly Cup)** - This is the national tiered tournament where they take on other 1st and 2nd XI sides.
- 3. U15's (Tanner Cup)** - This is an invitational tournament which plays host to some of the top U15 sides in the country.

## LOCAL COMPETITIONS

The 1st XI play locally in the Tauranga Premier League Men's grade, as a build up to the NZ Super 8 Hockey Competition which is for the best boys' schools in the Central North Island. They compete in a 2-day tournament to find the Super 8 Champion. Tauranga Boys' College also competes in traditional annual games against Auckland Grammar School, Hamilton Boys' High School, Rotorua Boys' High School, Westlake Boys' High School and St Paul's Collegiate.

The Gemming Cup is played between Tauranga Boys' College, Westlake Boys' High School, St Paul's Collegiate and Palmerston North Boys' High School.

**Dates for Hockey** - Beginning of April through till September (length of both terms 2 and 3)

## A TYPICAL TRAINING WEEK

As a member of the schools 1st XI you will have two turf sessions a week and access to the school weights room. During the week we play in the local competition and have inter school fixtures through term 2 and 3.

## OPPORTUNITIES FOR MORE HOCKEY

We encourage players to also trial for the Tauranga U18 team, as our program allows for players to participate in both teams. If they would prefer they can participate in our TBC Titans team, which plays on the weekends and focuses on developing players' strategic knowledge of the game.

## REPRESENTATIVE AND CLUB HOCKEY

A large number of the hockey players from Tauranga Boys are selected to play representative hockey for Tauranga regional teams. This allows players to experience the highest possible level of age group hockey in New Zealand (playing regular matches and attending National Tournaments).

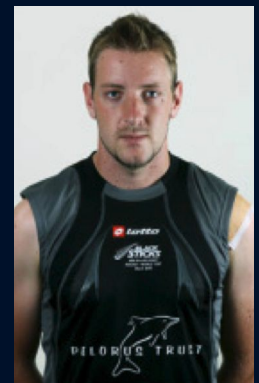
The school also has close links with the two largest hockey clubs in the region. Our top players often play Premier Men's Intercity Hockey (Midland Hockey League)



## PROFILE OF STEPHEN GRAHAM

(Coach and Staff Member at Tauranga Boys' College)

My name is Stephen Graham I was a Goalkeeper in the Black Sticks Mens' Hockey Squad since 2006 making my debut in 2007 on my home turf in 2012 after missing selection to the London Olympics. I have played for Tauranga Hockey through all the age groups and school hockey for Tauranga Boys' College. I am a proud member of the Midlands Senior Men's team in the New Zealand National Hockey League. One of my career highlights came in 2008 being part of the team that were National Champions.



I have a Bachelor of Education (Secondary) in Physical Education and Health. I have been coaching since 2004 working with the Southern North Island Regions at their regional coaching clinics. Since returning back to the Midlands regions in 2007 I have been involved with clinics in their region and academies. I have had Goalkeeper development roles in both the North Harbour and Midlands high performance programmes. I have also coached at the Kelt Capital and Midlands Hockey holiday programmes.



## PROFILE OF LOGAN GREEN

(Head Boy Tauranga Boys' College 2020)

Having been involved in Hockey at Tauranga Boys' College for 5 years, I can vouch for its supportive and friendly culture. With some of the most well-qualified and experienced coaches in New Zealand leading the program, the 1XI consistently features as one of the top national secondary school teams. In both the competitive teams and social grades, focus is firmly set on development rather than performance. All players reach their full potential to contribute to their team and the school's hockey program. My experiences through being involved with TBC Hockey have been nothing but positive. Playing Hockey at Tauranga Boys' College has taught me transferable skills which have set me in good stead for other aspects of life including leadership, self-discipline, teamwork and effective time management. As a result, I would not hesitate to recommend playing hockey at TBC to anyone.

